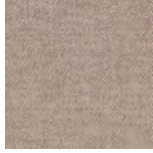


# STANDARD FABRICS

## LOFT Collection



White



Sand



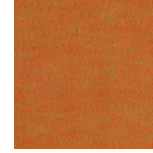
Silver



Grey



Mustard



Mandarin



Denim

### **Description:**

The LOFT fabrics boast an incredible depth of color and silky softness. Combining two colors of thread gives the fabric a multidimensional look and an appearance of depth, ideal for a loft or modern interior. The fabric's special stain-resistant coating makes it easy to clean.

### **Fabric type:** chenille

**Composition:** 62% AC, 29% PES, 5% VI, 4% LN

**Martindale abrasion:** 40'000 cycles (cat. B)

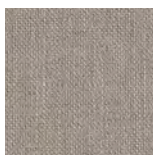
**Stain resistant:** yes

**Flame retardant:** on order

## COCO Collection



Creme



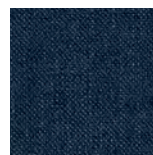
Beige



Taupe



Mustard



Indigo



Jeans

### **Description:**

Fabrics from the COCO collection are typical Scandinavian thick weave. The 366 Concept furniture in beiges and grays from this collection will perfectly match the classic Scandinavian interior in the style of mid-century modern.

### **Fabric type:** woven

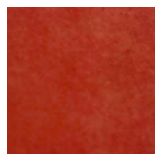
**Composition:** 84% PES, 16% AC

**Martindale abrasion:** 100'000 cycles (cat. A)

**Stain resistant:** no

**Flame retardant:** on order

## VELVET Collection



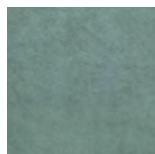
Chili Pepper



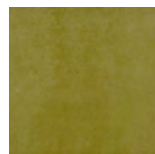
Merlot



Powder Pink



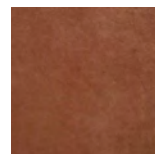
Mint



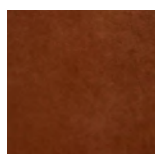
Olive



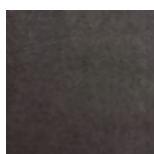
Bottle Green



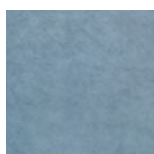
Sierra



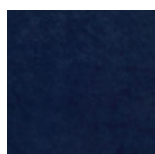
Red Brick



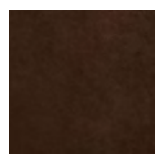
Graphite



Sky Blue



Indigo



Chocolate

### **Description:**

The VELVET collection is synonymous with luxury and elegance. Velvet has delighted since its arrival in Europe, providing a royal feel. This extremely tactile fabric, available in a soft colour palette, fits a broad range of interiors, adding a touch of glamour to any home. The fabric's special stain resistant coating makes it easy to clean.

**Fabric type:** knitted fabric

**Composition:** 100% PES

**Martindale abrasion:** 47'000 cycles (cat. A)

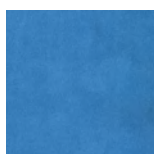
**Stain resistant:** yes

**Flame retardant:** on order

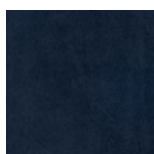
## SHINE VELVET Collection



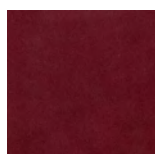
Taupe



Royal Blue



Indigo



Bordeaux



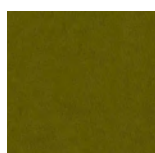
Mauve



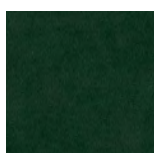
Mustard



Sierra



Olive



Emerald



Black

### **Description:**

The SHINE VELVET collection is synonymous with luxury and elegance. Velvet has delighted since its arrival in Europe, providing a royal feel. Shine Velvet is extremely tactile fabric, available in a soft color palette. It's very shiny, thanks to it beautifully harmonizes with light, changing the shade depending on the time of day.

**Fabric type:** knitted fabric

**Composition:** 100% PES

**Martindale abrasion:** 115'000 cycles (cat. A)

**Stain resistant:** yes

**Flame retardant:** on order

# STANDARD FABRICS

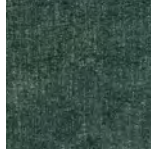
## MARBLE Collection



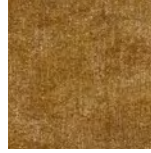
White



Beige



Bottle Green



Mustard



Orange



Indigo



Light Blue



Black

### **Description:**

Fabrics from the MARBLE collection are characterized by a unique structure, reminiscent of natural marble. There are no two identical pieces of this fabric. Thanks to it your furniture will be absolutely unique.

**Fabric type:** chenille

**Composition:** 87% PES, 13% RAYON

**Martindale abrasion:** 45'000 cycles (cat. B)

**Stain resistant:** no

**Flame retardant:** on order

## CORD Collection



Creme



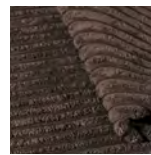
Taupe



Cappuccino



Mint



Cacao

### **Description:**

CORD fabric is very soft and pleasant to the touch, and at the same time an extremely strong and durable velvet fabric with an interesting, albeit classic texture. Perfect as a cover of the whole piece of furniture, a single element or as a material for elegant and stylish accessories.

**Fabric type:** velvet

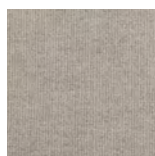
**Composition:** 84% PES

**Martindale abrasion:** 100'000 cycles (cat. A)

**Stain resistant:** no

**Flame retardant:** on order

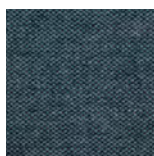
## WOOL Collection



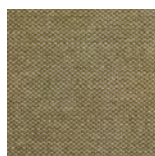
Sand



White Blue



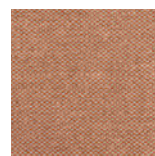
Grey Blue



Light Mustard



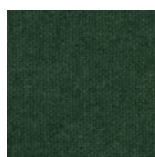
Mustard



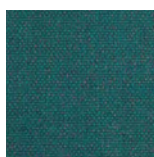
Orange Beige



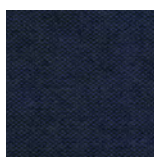
Olive



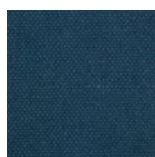
Bottle Green



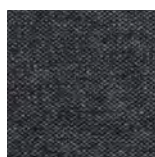
Turquoise



Blue



Jeans



Grey Black

### **Description:**

The WOOL collection uses new-generation fabrics made from natural materials. Weaving long, smooth wild flax fibre between the wool creates an eye-catching two-tone colour inspired by precious stones. The addition of flax makes Wool fabrics less flammable, which means that they are ideal for commercial interiors, such as hotels or restaurants.

**Fabric type:** woven

**Composition:** 70% WO, 30% LI

**Martindale abrasion:** >50'000 cycles (cat. A)

**Stain resistant:** no

**Flame retardant:** yes

## BOUCLE Collection



Creme



Beige



Taupe



Olive



Mustard



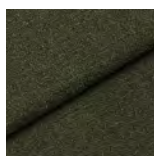
Denim



Jeans



Sierra



Bottle Green

### **Description:**

Boucle fabric is a material woven from yarns with an irregular structure, with knotty lugs that can create a cozy atmosphere. It is coated with molecules and a hydrophobic coating that protects fabric from dirt and absorption of liquids. It also meets high quality standards – Oeko-Tex Standard 100 certificate. It has been subjected to laboratory tests to check resistance to puffs caused by scratching.

**Fabric type:** loop fabric

**Composition:** 68% PA, 29% PES, 3% VI

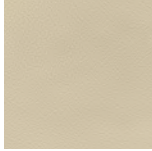
**Martindale abrasion:** 50'000 cycles (cat. A)

**Stain resistant:** yes

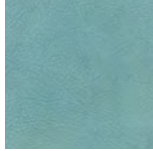
**Flame retardant:** yes

# STANDARD FABRICS

## NATURAL LEATHER Collection



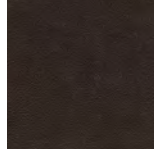
Creme



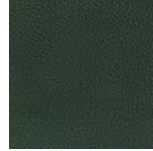
Light Blue



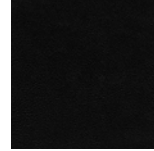
Cognac



Mocca



Bottle Green



Black

### ***Description:***

Natural leather available in our collection is one of the best naturally and sustainably tanned leathers – with rhubarb. Chromium-free leather tanning is a new, innovative way to obtain this noble raw material in an environmentally friendly manner. Natural leather can get dirty from fats, liquids or jeans.

**Fabric type:** natural leather

**Composition:** 100% natural leather dyed with rhubarb

### **Certificate:**

Member of the International Association of Natural Textiles (IVN e.V.)